

Aimetis Motion Tracker

1.1

User Guide

Contents

| | |
|---|----|
| Introduction..... | 3 |
| Installation..... | 4 |
| Requirements..... | 4 |
| Install Motion Tracker..... | 4 |
| Open Motion Tracker..... | 4 |
| Add a license..... | 4 |
| Configuration..... | 6 |
| Configure Motion Tracker..... | 6 |
| Settings..... | 7 |
| Draw a processing mask..... | 8 |
| Create an alarm..... | 8 |
| Add a tripwire..... | 9 |
| Remove a tripwire..... | 10 |
| Start or stop an embedded video analytic..... | 10 |
| Reset Motion Tracker..... | 10 |
| Legal information..... | 11 |

Introduction

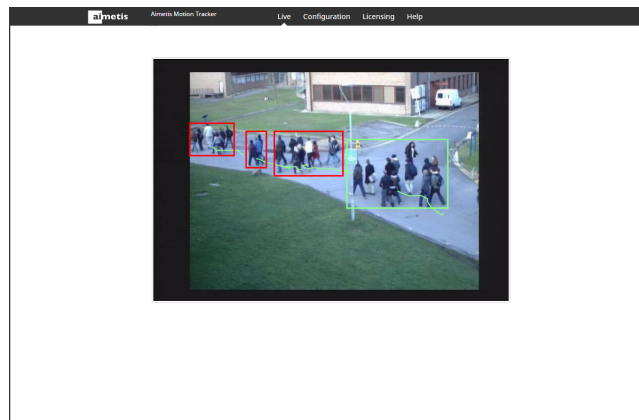
The Aimetis Motion Tracker is an embedded video analytic that provides reliable motion tracking and alarms for Axis network cameras and encoders.

You can define the areas in the scene that Motion Tracker monitors. Motion Tracker can trigger alarms based on motion in a defined area or across virtual tripwires.

To use Motion Tracker alarms in Symphony, you must add the camera with the Motion Tracker embedded video analytic to Symphony and create an alarm in Symphony for the camera.

The live view for Motion Tracker includes the following elements:

- Green boxes and lines mark movement.
- Red boxes mark movement that triggers alarms.



Installation

Install Motion Tracker on a camera using the camera Web interface.

You must install the version of Motion Tracker that matches the CPU of the camera (either Artpec-6 or Artpec-5 and earlier). For information on checking the CPU of a camera, see [KB10342](#).

Requirements

| Component | Requirements |
|-----------------|--|
| Camera CPU | One of: <ul style="list-style-type: none"> • ARTPEC-4 • ARTPEC-5 • ARTPEC-6 |
| Camera firmware | Supports Embedded Development Version 2.0 |
| License | Aimetis Motion Tracker (AIM-AX-MT) |

Install Motion Tracker

1. Download the Motion Tracker analytic package from <http://www.Aimetis.com/Xnet/>.
2. Log in to the camera home page.
3. Click **Settings**.
4. Click the **Apps** tab.
5. Click **Add**.
6. Click **Browse** and select the Motion Tracker analytic package.
7. Click **Install**.
8. On the **Apps** tab, click **Aimetis Motion Tracker**.
9. Click the **Start and stop the app** toggle switch.

Open Motion Tracker

1. Log in to the camera home page.
2. Click **Settings**.
3. Click the **Apps** tab.
4. Click **Aimetis Motion Tracker**.
5. Click **Open**.
6. If this is your first time logging in, click **Accept** to accept the Aimetis License Warranty.

Add a license

1. On the camera home page, click **Settings > Apps > Aimetis Motion Tracker**.
2. Click **Open**.

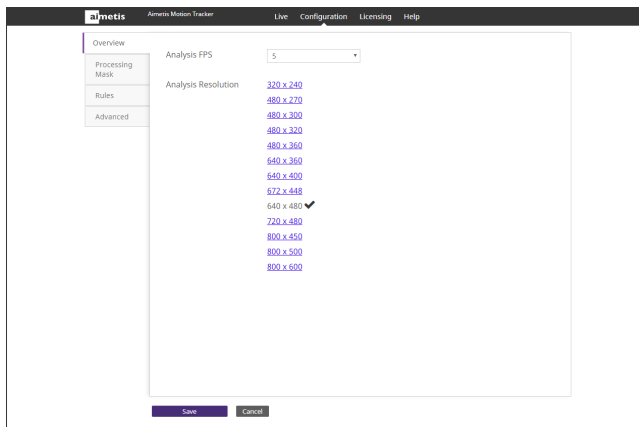
3. Click **Licensing**
4. Copy the camera MAC address.
5. Open <http://www.Aimetis.com/Xnet/> and click **Account Management**.
6. Under **Embedded Analytics**, click **Add**.
7. Type a name for the camera.
8. In the **MAC Address** field, copy the MAC address of the camera.
9. Select **I will add licenses to this camera**.
10. Click **Register Camera**.
11. Click **Embedded Analytics**.
12. Copy the license key.
13. In the Motion Tracker administration interface, click the **Change** button.
14. In the **License Key** field, paste the license key.
15. Press **Save**.

Configuration

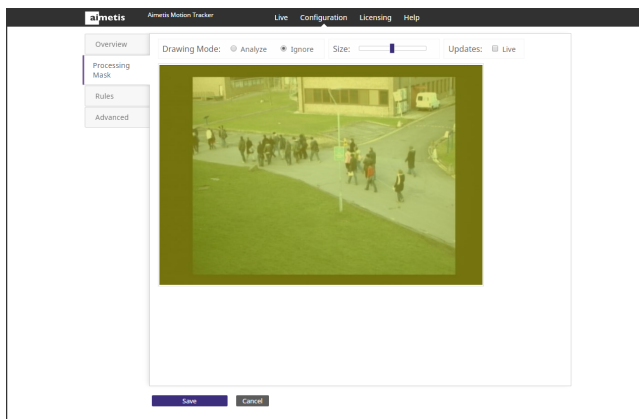
Configure Motion Tracker using the administration interface in a browser. When you install Motion Tracker on a camera, you can access the camera home page from the Web interface of the camera.

Configure Motion Tracker

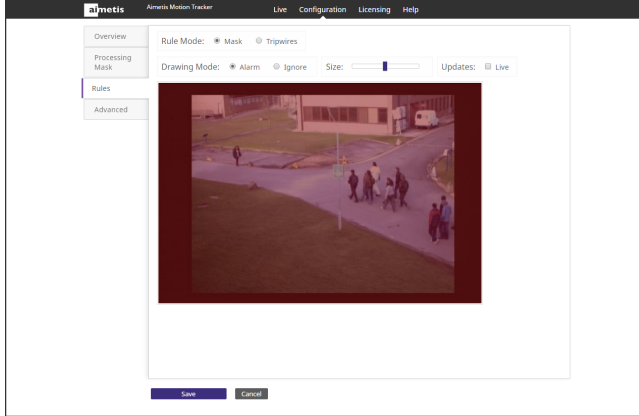
1. In the Motion Tracker administration interface, click **Configuration**.
2. On the **Overview** tab, configure general settings for the camera.



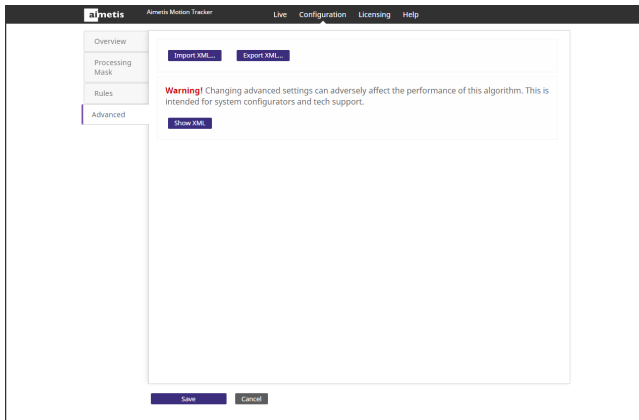
3. On the **Processing Mask** tab, set the areas in the image that the camera ignores or analyzes.



- On the **Rules** tab, define how and when Motion Tracker generates alarms.



- On the **Advanced** tab, edit the XML file that contains the configuration settings.



- Click **Save**.

Settings

Overview

| Setting | Description |
|---------------------|---|
| Analysis FPS | Set the frames per second for the camera on which Motion Tracker is active. This value is fixed at 5 FPS. |
| Analysis Resolution | Set the resolution for the camera on which Motion Tracker is active. |

Processing Mask

| Setting | Description |
|--------------|--|
| Drawing Mode | Select whether the paintbrush marks areas in the processing mask image to include (Analyze) or exclude (Ignore). |
| Size | Select the size of the paintbrush that you use in the processing mask image. |
| Updates | Select whether the image in the processing mask is static or live. |

Rules

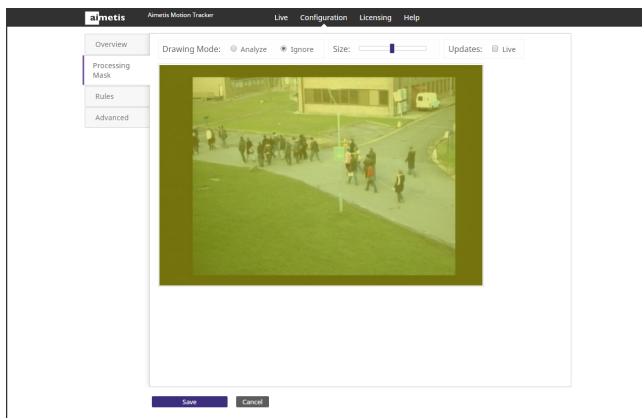
| Setting | Description |
|--------------|--|
| Rule Mode | Select whether to draw a mask or a tripwire. |
| Drawing Mode | Select whether to add a mask or tripwire rule. |
| Size | Select the size of the mask. |
| Updates | Select whether the image in the is a live image from the camera or a static image. |

Advanced

| Setting | Description |
|------------|---|
| Import XML | Import the configuration XML from a file. |
| Export XML | Export the configuration XML to a file. |
| Show XML | Show the configuration XML. |

Draw a processing mask

1. In the Motion Tracker administration interface, click **Configuration**.
2. Click **Processing Mask**.

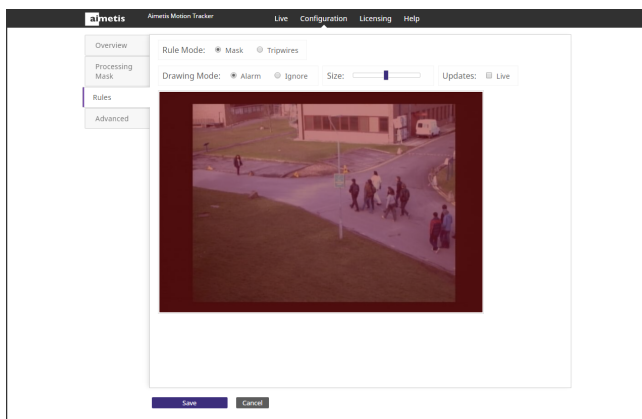


3. Perform one of the following tasks:
 - a) To define an area that the camera analyzes, select **Analyze**.
 - b) To define an area that the camera does not analyze, select **Ignore**.
 By default, the entire camera view is set to analyze.
4. Use the **Size** slider to set the size of the paint brush.
5. To use a live image to define the processing mask, select **Live**.
6. Use the mouse to draw the area on the camera view.
7. Click **Save**.

Create an alarm

1. In the Motion Tracker administration interface, click **Configuration**.

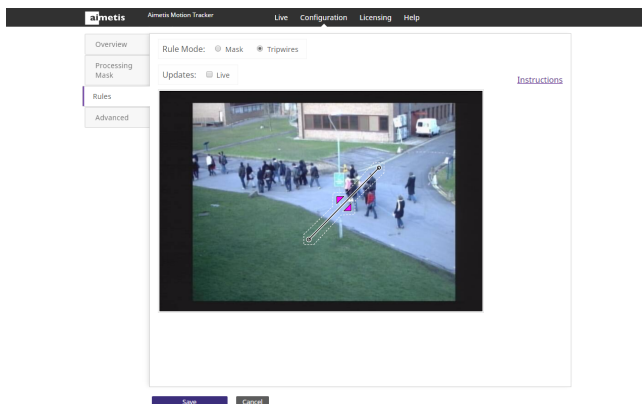
2. Click **Rules**.



3. In the **Alarm type** list, select whether a mask or tripwires trigger the alarm.
4. Perform one of the following tasks:
 - a) To use a mask, draw a mask to define the area in which motion triggers an alarm.
 - b) To use tripwires, add a tripwire across which motion triggers an alarm.
5. Click **Save**.

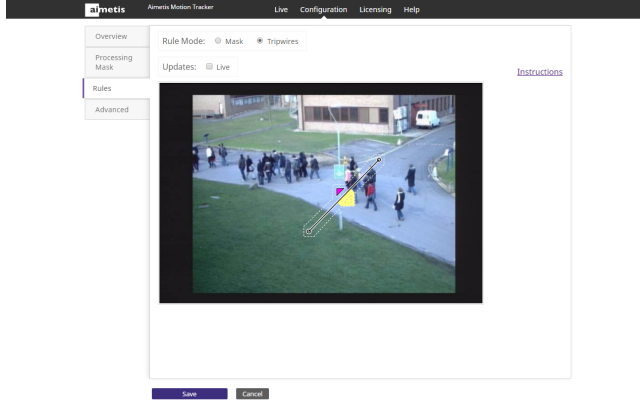
Add a tripwire

1. In the Motion Tracker administration interface, click **Configuration**.
2. Click **Rules**.
3. Select **Tripwires**.
4. In the image, click and hold the left mouse button, move the mouse across the image, and release the left mouse button.



To add a tripwire to the end of another tripwire, hold down the left mouse button where the tripwire ends (it will show a yellow square), move the mouse across the image, and release the left mouse button.

- To set the direction of motion that the tripwire detects, click the arrows on the tripwire.



The tripwire detects motion across the tripwire line in the same direction as the visible arrows on the tripwire.

- Click **Save**.

Remove a tripwire

- In the Motion Tracker administration interface, click **Configuration**.
- Click **Rules**.
- Select **Tripwires**.
- Click a tripwire.
- Press Delete.
- Click **Save**.

Start or stop an embedded video analytic

- Log in to the camera home page.
- Click **Settings**.
- Click the **Apps** tab.
- Click the embedded video analytic.
- Click the **Start and stop the app** toggle switch.

Reset Motion Tracker

- In the Motion Tracker administration interface, click **Help**.
- Click **Reset to Factory Defaults**.

Legal information

Copyright © 2017 Aimetis Corp. and/or its Licensor(s). All rights reserved.

This material is for informational purposes only. Aimetis makes no warranties, express, implied or statutory, as to the information in this document.

Complying with all applicable copyright laws is the responsibility of the user. Without limiting the rights under copyright, no part of this document may be reproduced, stored in or introduced into a retrieval system, or transmitted in any form or by any means (electronic, mechanical, photocopying, recording, or otherwise), or for any purpose, without the express written permission of Aimetis Corp.

Aimetis may have patents, patent applications, trademarks, copyrights, or other intellectual property rights covering subject matter in this document. Except as expressly provided in any written license agreement from Aimetis, the furnishing of this document does not give you any license to these patents, trademarks, copyrights, or other intellectual property.

Aimetis® and Aimetis Symphony® are either registered trademarks or trademarks of Aimetis Corp. in the United States and/or other countries.

Portions of this software are based in part on the work of the Independent JPEG Group.